




## The Juniper | \$290,000 CAD\*

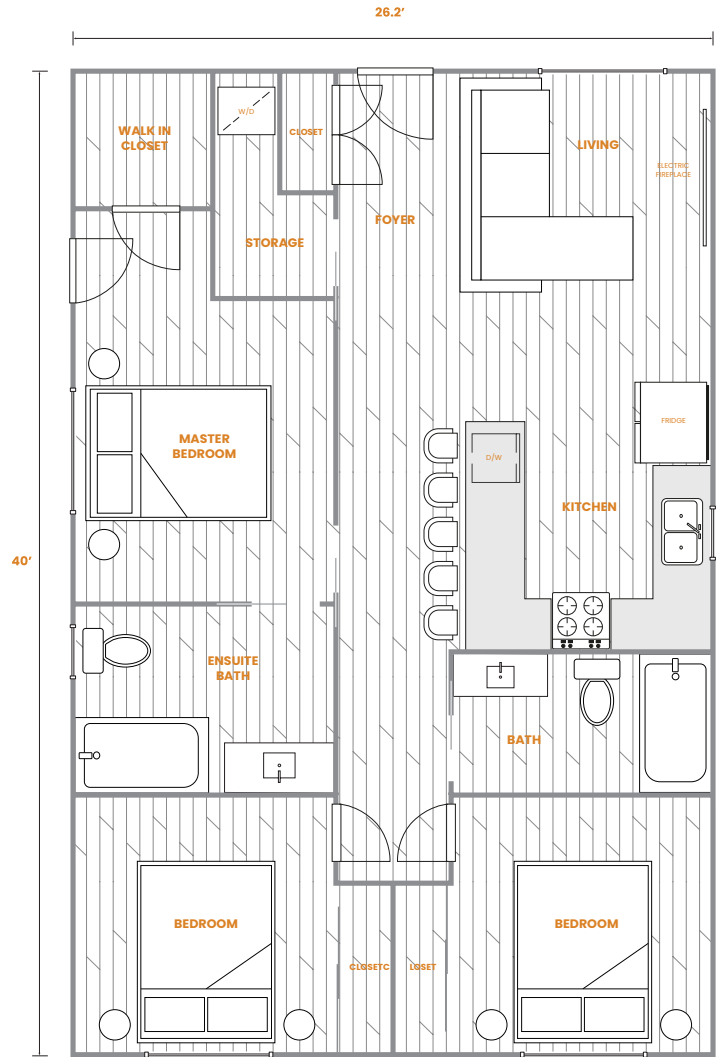
-  3 Bedroom
-  2 Bathroom
-  1,048 sq.ft. Interior

Discover the Juniper Model by Lane One Homes, a beautifully designed manufactured home that combines style and functionality. This spacious 1,048 sq. ft. layout offers three comfortable bedrooms and two well-appointed bathrooms, making it ideal for families or those who appreciate extra space.

Perfect for those seeking a modern, affordable living solution without compromising on quality, the Juniper is a testament to our commitment to excellence in manufactured home design. Experience the perfect blend of comfort and style in your new home today!

### Unit Specifications

- Ground Level Single Floor Detached House
- 3 Bedroom
- 2 Bathroom
- 1,048 sq.ft. Living Space
- Smart Home Technology
- Ultra Energy Efficient Homes
- 20 Gauge Structural Steel
- Hardie Board Siding  
(Premium Metal Siding Optional Upgrade)
- Spray Foam Insulation
- Stainless Steel Appliances:  
(Double Door Refrigerator, Stove, DW, W/D)
- 9.5' Ceilings
- Heat Pump with Air Conditioning
- Hot Water on Demand
- Double Pane Vinyl Windows
- Vinyl Click Lock Flooring Throughout
- Aluminum & Glass Awning
- Open Concept Living
- Extra Storage Throughout
- LED Exterior Lighting



This is not an offering for sale. Prices, layouts, unit numbers/addresses, features and finishes, and internal and external areas are subject to change without notice. Floor plans may be oriented differently than displayed. Lane One Homes reserves the right to change floorplans, pricing, and materials without notice. \*Price does not include tax, transportation or installation costs.