




The Willow | \$225,000 CAD

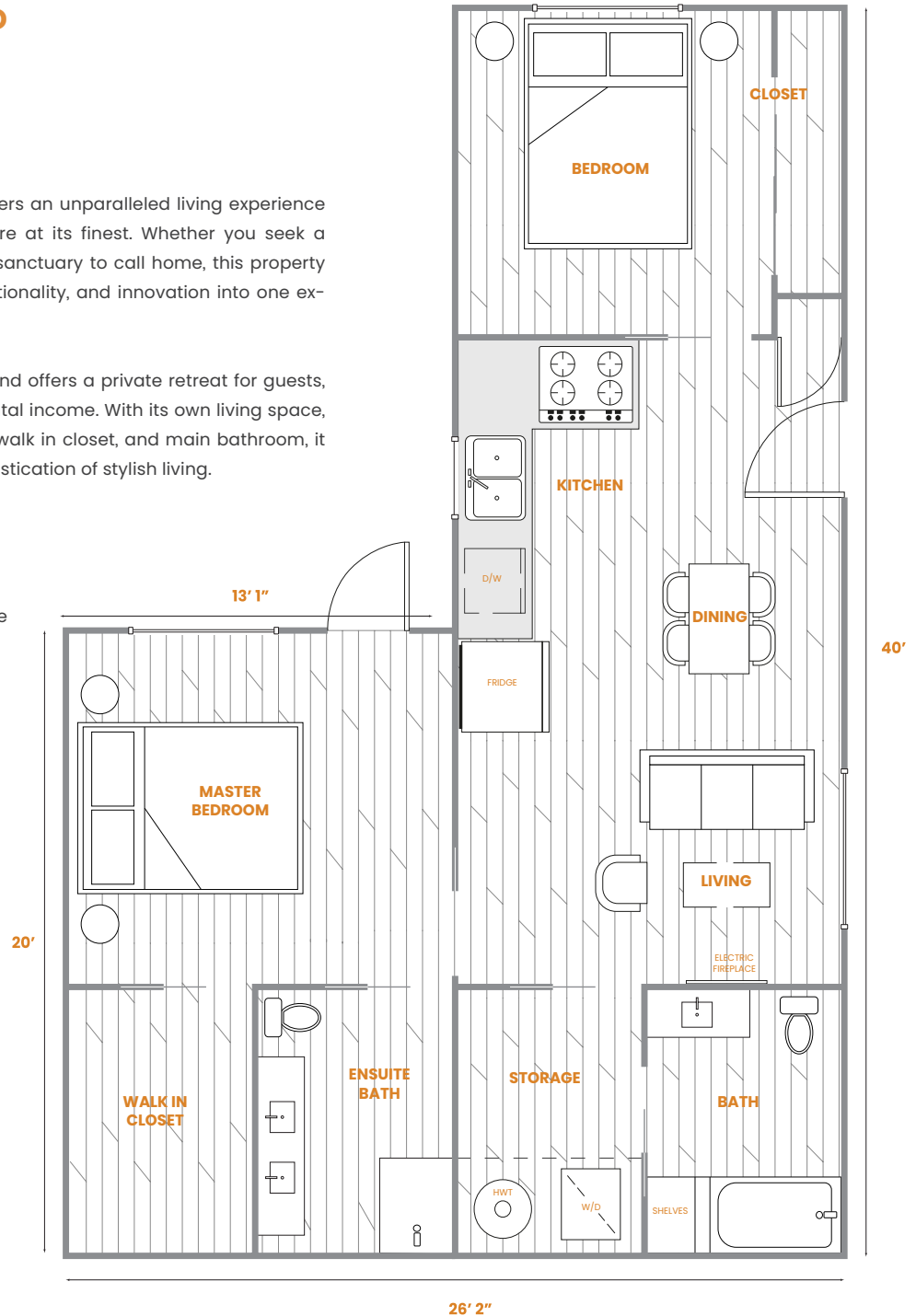
-  2 Bedroom
-  2 Bathroom
-  786 sq.ft. Interior

This brand new, modern-designed house offers an unparalleled living experience that encapsulates contemporary architecture at its finest. Whether you seek a stylish investment opportunity or a modern sanctuary to call home, this property ensemble seamlessly blends elegance, functionality, and innovation into one exceptional package.

This standalone dwelling exudes character and offers a private retreat for guests, extended family, or even the possibility of rental income. With its own living space, full kitchen, two bedrooms with ensuite and walk in closet, and main bathroom, it perfectly complements today's modern sophistication of stylish living.




Unit Specifications

- Ground Level Single Floor Detached House
- 2 Bedroom
- 2 Bathroom
- 786 sq.ft. Living Space
- Smart Home Technology
- Ultra Energy Efficient Homes
- 20 Gauge Structural Steel
- Hardie Board Siding
(Premium Metal Siding Optional Upgrade)
- Spray Foam Insulation
- Stainless Steel Appliances:
(Refrigerator, Stove, Dishwasher, W/D)
- 9.5' Ceilings
- Heat Pump with Air Conditioning
- Electric Fireplace
- Electric Hot Water Heater
- Double Pane Vinyl Windows
- Vinyl Click Lock Flooring Throughout
- Aluminum & Glass Awning
- Open Concept Living
- Extra Storage Throughout
- LED Exterior Lighting



This is not an offering for sale. Prices, layouts, unit numbers/addresses, features and finishes, and internal and external areas are subject to change without notice. Floor plans may be oriented differently than displayed. Lane One Homes reserves the right to change floorplans, pricing, and materials without notice. Price does not include GST, transportation or installation costs.

The Willow | \$200,000 CAD

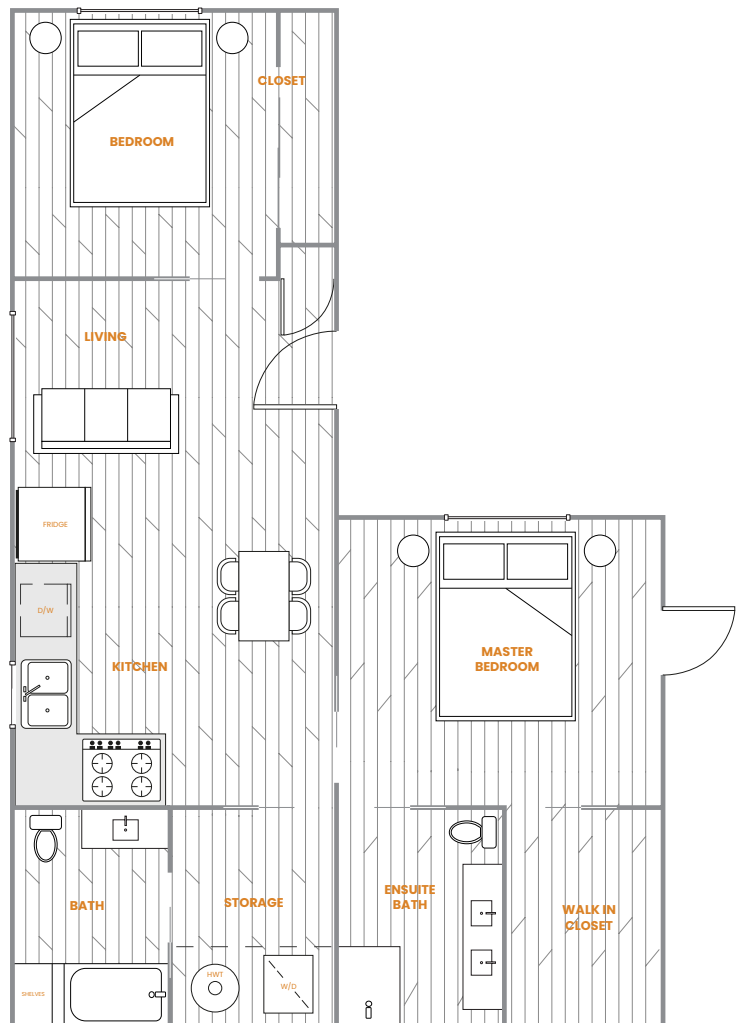
-  2 Bedroom
-  2 Bathroom
-  786 sq.ft. Interior

This brand new, modern-designed house offers an unparalleled living experience that encapsulates contemporary architecture at its finest. Whether you seek a stylish investment opportunity or a modern sanctuary to call home, this property ensemble seamlessly blends elegance, functionality, and innovation into one exceptional package.

This standalone dwelling exudes character and offers a private retreat for guests, extended family, or even the possibility of rental income. With its own living space, full kitchen, two bedrooms with ensuite and walk in closet, and main bathroom, it perfectly complements today's modern sophistication of stylish living.

Unit Specifications

- Ground Level Single Floor Detached House
- 2 Bedroom
- 2 Bathroom
- 786 sq.ft. Living Space
- Smart Home Technology
- Ultra Energy Efficient Homes
- 20 Gauge Structural Steel
- Hardie Board Siding
(Premium Metal Siding Optional Upgrade)
- Spray Foam Insulation
- Stainless Steel Appliances:
(Refrigerator, Stove, Dishwasher, W/D)
- 9.5' Ceilings
- Heat Pump with Air Conditioning
- Electric Fireplace
- Electric Hot Water Heater
- Double Pane Vinyl Windows
- Vinyl Click Lock Flooring Throughout
- Aluminum & Glass Awning
- Open Concept Living
- Extra Storage Throughout
- LED Exterior Lighting



This is not an offering for sale. Prices, layouts, unit numbers/addresses, features and finishes, and internal and external areas are subject to change without notice. Floor plans may be oriented differently than displayed. Lane One Homes reserves the right to change floorplans, pricing, and materials without notice. Price does not include GST, transportation or installation costs.